

napure[®] MIRROR

"Napure Mirror" is a high-class mirror more excellent than others and reflects the real color of your skin as seen by others.

PAT.3732490

Napure HAIR CHECK-UP MIRROR

For permanently keeping your beautiful hair
You can check the top of your head and the hair whorl.
Convenient for hair dyeing and wearing a wig.



For daily makeup...
Napure Mirror reflects the real color of your skin as seen by others. Good for your daily makeup!

For hair dyeing...
The bottom mirror reflects the top of your head and the hair whorl. You can easily dye your hair or wear a wig with best finish.

For wearing a wig...
The bottom mirror reflects the top of your head and the hair whorl. You can easily dye your hair or wear a wig with best finish.



The bottom mirror reflects the top of your head and the hair whorl.

Designed in a small size



Foldable for conveniently putting in your bag

For your daily makeup as a stand mirror

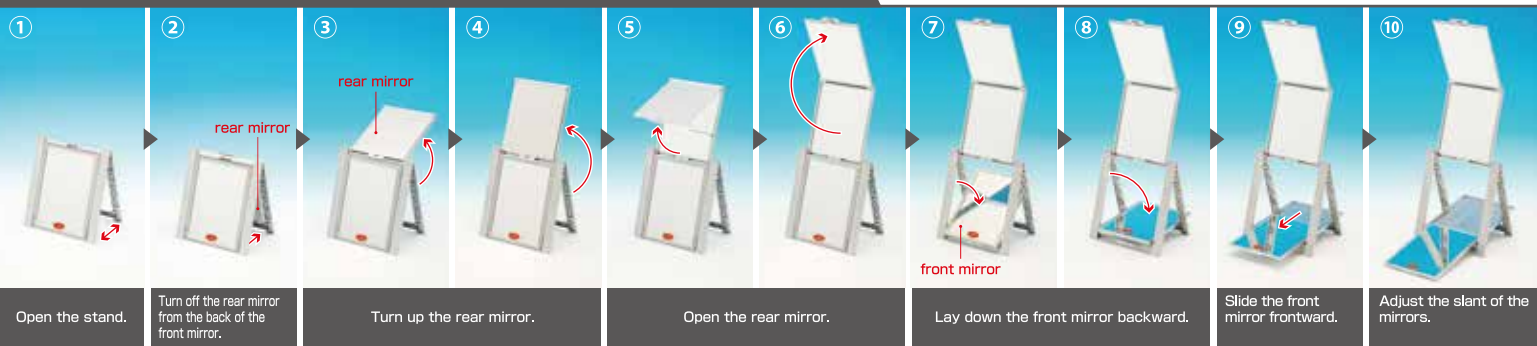


silver

rose pink

black

Usage of HAIR CHECK-UP MIRROR *Do not lift the frame not to make the front mirror slide off the frame.



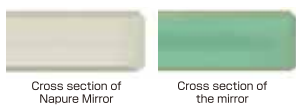
What is "Napure Mirror"?

The mirror reflecting the real color of your skin as seen by others

The most suitable mirror for matching the colors of your skin and afoundation and for partial makeup

Glass of high clarity

The glass used for the conventional mirrors contains considerable amount of iron to absorb blue light of the incident light and make white color look dull. We have developed "Napure Mirror" made of clear glass with minimum iron content. "Napure Mirror" rarely changes the reflected colors to show natural and pure colors without influence by the glass. Thus "Napure Mirror" is the most suitable for matching the foundation to the colors of your skin and partial makeup.



Cross section of Napure Mirror

Cross section of the mirror

Napure Mirror (in our test)

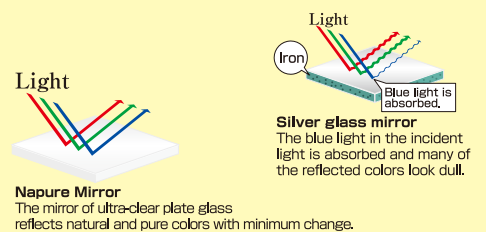
Reflects real color of human skin with minimum color change.

Conventional silver glass mirror (in our test)

White color is reflected into slightly yellowish white and other colors are reflected colors look dull.

Glass of high clarity + Reflective metal layer by vacuum deposition = "Napure Mirror" reflects natural pure colors with minimum change.

Comparison in reflection (in our test)



*The photo shows an image of reflection.

HAIR CHECK-UP MIRROR

*The specification and suggested retail price may be changed.

Product name	Item Code	Suggested retail price	Size	Color	JAN	Quantity per carton	Material
HAIR CHECK-UP MIRROR	HCM-1	¥5,000 and tax	[Product]w176mm×h196mm×d20mm	Silver	773586	24	[Frame]ABS resin
Napure Mirror			(The longest:about w176mm×h490mm×d320mm)				
			[Package]w188mm×h205mm×d32mm	Black	773616		[Mirror]Napure Mirror

*Do not lift the frame. It may make the front mirror slide off the frame to break or injure the user. When the front mirror slides off, put it back into the frame.

*Do not give impact to the mirrors by dropping off, etc. Impacted mirrors may break and hurt the user. *The metal parts of the mirrors are deteriorated when stored at high temperature and humidity for a long time. *Chemicals sticking on the mirrors must be wiped off with dry cloth.

*Each of the "JAN codes" given in six digits in this catalogue constitutes the product code and check digit, and follows the code, 4510510 indicating the country and manufacturer codes.