

Utility model registration applied

Stand Mirror flexibly used according to the conditions of makeup
PERFECT CHECK-UP 3-WAY MIRROR

Napure Mirror reflects the real color of your skin.
 Triple mirror convenient for the makeup on the whole of your face,
 for partial makeup such as eye makeup, and for checking hair dyeing and wearing a wig.

The direction, slant and height of the mirror are adjustable.*

NEW!
napure MIRROR
 *Napure Mirror is a high-clear mirror more excellent than others and reflects the real color of your skin as seen by others.
 [Japanese Patent No.3732490]

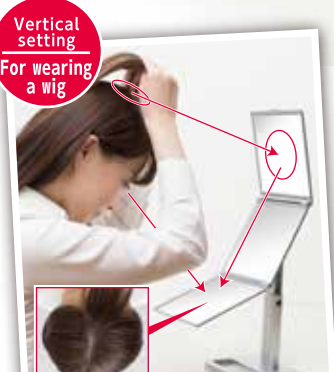
You have been facing such a trouble

Difficulty in makeup



Horizontal setting
 For makeup

New 3-Way Mirrors with Large Side Mirrors



The side mirrors reflect your neckline to support easy and complete hair dyeing.

Convenient for eye makeup with the top, center, and bottom mirrors, each reflecting your "upturned eyes", "straight eyes" and "downcast eyes"

The bottom mirror reflects the top of your head and hair whorl. You can easily dye your hair or wear a wig with best finish.

The top mirror shows the height of your cheek bone. You can apply the makeup suitable to the framework of your face.

What is "Napure Mirror"? [Japanese Patent No.3732490]
The mirror reflecting the real color of your skin as seen by others
 The most suitable mirror for matching the colors of your skin and a foundation and for partial makeup

Glass of high clarity + Reflective metal layer by vacuum deposition = "Napure Mirror"
 reflects natural pure colors with minimum change.

Glass of high clarity
 The glass used for the conventional mirrors contains considerable amount of iron to absorb blue light of the incident light and make white color look dull. We have developed "Napure Mirror" made of clear glass with minimum iron content. "Napure Mirror" rarely changes the reflected colors to show natural and pure colors without influence by the glass. Thus "Napure Mirror" is the most suitable for matching the foundation to the colors of your skin and partial makeup.

Napure Mirror (in our test)
 Cross section of Napure Mirror
 Reflects real color of human skin with minimum color change.

Conventional silver glass mirror (in our test)
 Cross section of this mirror
 White color is reflected into slightly yellowish white and other colors are reflected colors look dull.

Comparison in reflection (in our test)

Iron
 Blue light is absorbed.

Silver glass mirror
 The blue light in the incident light is absorbed and many of the reflected colors look dull.

Napure Mirror
 The mirror of ultra-clear plate glass reflects natural and pure colors with minimum change.



Knockdown stand mirror Flexibly used according to the conditions for makeup!
PERFECT CHECK-UP 3-WAY MIRROR

Product name	PERFECT CHECK-UP 3-WAY MIRROR
Item Code.	[Silver]NA-56SV [Gold]NA-56G [Rose pink]NA-56P
Suggested retail price	¥6,500 and tax
Product (Horizontal triple mirror)	:w 175mm×D 140mm×H 255mm (High 360mm)
Product (Vertical triple mirror)	:w 160mm×D 140mm×H 265mm (High 370mm)
Size	Mirror size: front 150mm×150mm / Side Mirrors 150mm×150mm
	The horizontal triple mirror: 155mm×500mm
	Package size: 183mm×258mm×85mm
Weight	Net weight: 635g / Gross weight: 795g
Color	Silver, Gold, Rose pink
JAN	[Silver] 773814 [Gold] 773821 [Rose pink] 773838
Carton size	590mm×280mm×570mm
Quantity per carton	18
Material	[Knockdown stand mirror] [Frame] ABS resin [Mirror] Napure Mirror

●Contents in the package: Mirror, Stand, Two screws, Tow washers, Instruction manual **MADE IN JAPAN**
 *The photos show an image of reflection.
 *Each of the "JAN codes" given in six digits in this catalogue constitutes the product code and check digit, and follows the code, 4510510 indicating the country and manufacturer codes.

*Do not give impact to the mirror by dropping off, etc. Impacted mirror may break and hurt the user. *Do not use or store the mirror at a place where the mirror may fall or may be exposed to direct sunlight, heat or high temperature. *Wipe the moisture or stain on the mirror with dry soft cloth. *Keep the mirror out of reach of children. *The metal parts of the mirrors are deteriorated when stored at high temperature and humidity for a long time. *Chemicals sticking on the mirrors must be wiped off with dry cloth. *Do not pull up or down the shaft forcibly. It may damage the shaft or pinch your finger. *Protect the spring pin of the hinge from oil stain which may decrease the strength of the spring.

About 1 min Assembly time

Procedure
 ① Put the frame into the stand.
 ② Set the washers on the screws and fix the screws with the screw driver.
 *The threaded holes are slightly smaller than the diameter of the screws in order to fix the mirror firmly. Install the screw strongly.

Assembly time
 Prepare a cross slot screw driver.

Mirror × 1
 Stand × 1
 Washers × 2
 Screws × 2

Tightness of the height-adjustment joint
 The tightness of the joint can be adjusted by turning the screws (A) and (B) with a cross slot screw driver. The interspace (C) prevents your finger from pinching at the joint.