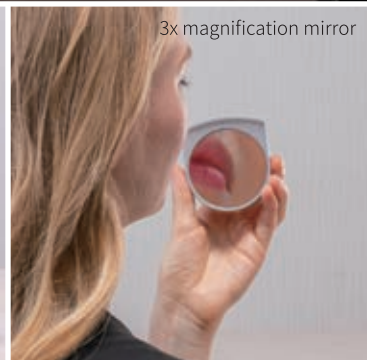
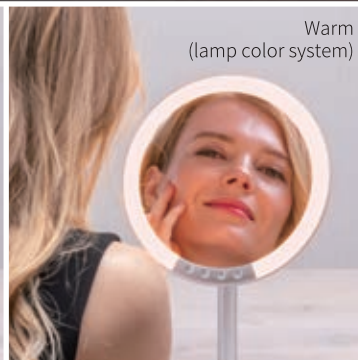
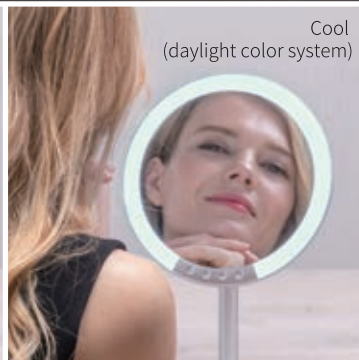
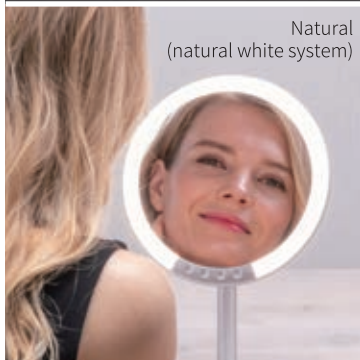
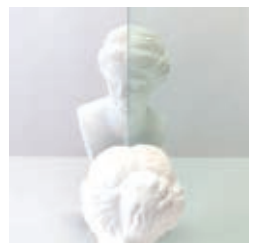


 HORIUCHI MIRROR®

LED Stand Mirror



HORIUCHI MIRROR is only the mirror that accurately reflect the natural color of your skin. The natural color of your skin is reflected directly and genuinely in the mirror by collect reproduction of colors. Correctly reflected color of your skin helps you match the make up colors with your face. Daily use of the Mirror opens the way to gain more beautiful skin.

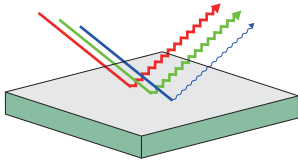


LED Stand Mirror

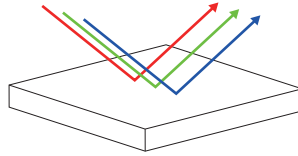
Perfect your base makeup with the best choice of makeup light. HORIUCHI MIRROR LED Stand Mirror is a standing mirror explicitly designed to provide you with the best light for your makeup needs while being unaffected by the weather and other light sources from the surrounding environment.

HORIUCHI MIRROR

Capture the correct color of your skin with a specially designed mirror unaffected by the under glasses' color.



Silver Glass Mirror
The blue light in the incident light is absorbed and many of the reflected colors look dull.



HORIUCHI MIRROR
The mirror of ultra-clear plate glass reflects natural and pure colors with minimum change.

Choose the best makeup light from the three available settings.

Choose from the three available light settings to create and perfect your makeup for special occasions. Freely simulate the light environment for your special occasions with eight adjustable light strength level for each setting.



Natural
(natural white system)
For use when applying makeup or skin care, conscious of sunlight light source.



Cool
(daylight color system)
For use when applying makeup or checking makeup, conscious of an office light source.



Warm
(lamp color system)
For use when applying makeup or checking makeup, conscious of a restaurant light source.



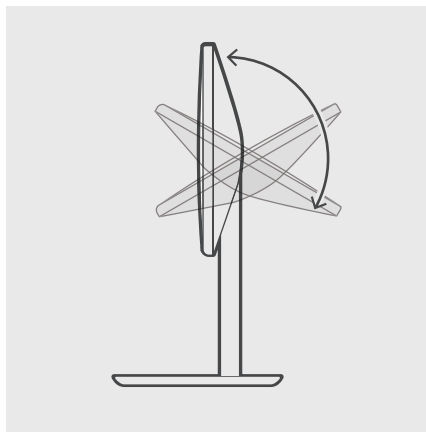
3x magnifying mirror*

Perfect your eye makeup and other delicate processes with the provided magnet 3X magnifying mirror (※This magnet mirror utilized our company's normal mirrors instead of HORIUCHI MIRROR)



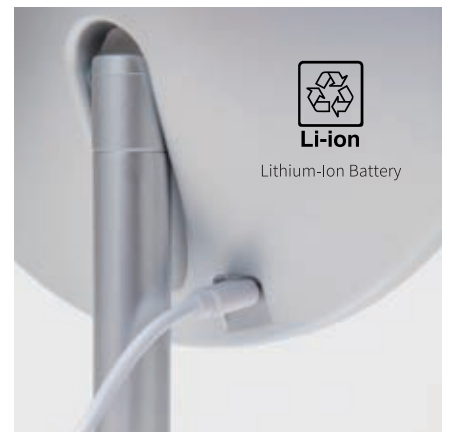
Can be used rotated 120 degrees.

Adjust the mirror to capture a better angle for your makeup with a 120-degree adjustable stand.



Continuously usable for 3.5 hours per full charge.

Recharge the mirror for further usage using mobile batteries, USB chargers, PC chargers, and USB ports.



Product name	Item Code / JAN	Color	Scheduled price (Tax excluded)	Material	Size / Weight (about)	Accessories
LED Stand Mirror	HL-01 4510510775627	Silver	¥7,000	[Frame] ABS resin, Polycarbonate [1X mirror] Glass mirror [3X magnifying mirror] Silver glass Mirror	[Product] W 200mm × D 165mm × H 330mm, 520g	USB cable Cleaning cloth instruction manual

specification

Included Battery: 3.7V Lithium-Ion Battery. Battery Capacity: 2000mAh. Rated Input Current: DC5V/1A. Operating Temperature: 0~40°C. Charging Time: Approximately 5 Hours. Continuous Usage Time: 3 Hours 30 Minutes at Light Strength [4].¹ 3 Light Color Settings: Natural (Bright White), Cool (Daylight), Warm (Warm White). Light Strength Level: 8 For Each Color Setting. Packaging: Paper Pack/Label. Made in Japan. 1-Year Guarantee Included.

¹ This time amount is measured on light strength [4], from the time the stand is fully charged until the light level has decreased to 70% of the total luminous flux.
Total Luminous Flux: A standard scale for measuring light intensity. Measuring Unit: lm (Lumen)